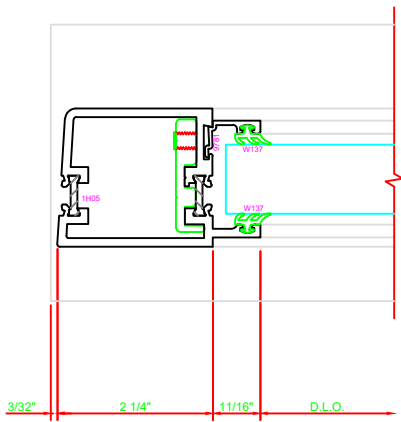


| | |
|-----|----------------------------|
| 300 | STILE |
| | S/A D202 FOR OFFSET PIVOTS |

ERASE NOTE

BUTT HINGES CAN NOT BE USED WITH THERMASTILE DOORS

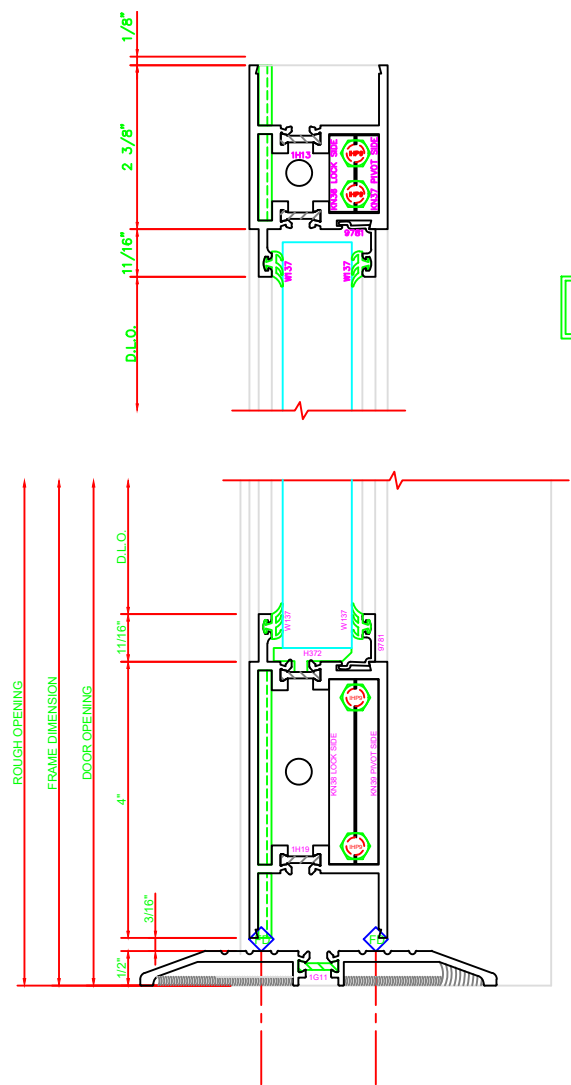
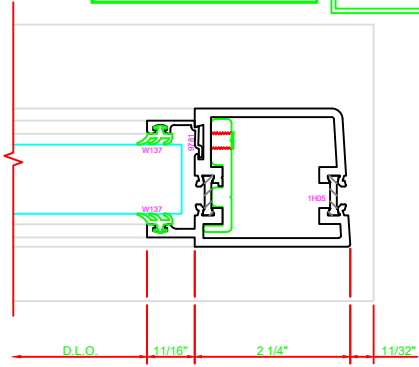


| | |
|-----|---------------------------|
| 303 | STILE |
| | S/A D202 CONTINUOUS HINGE |

ERASE NOTE

STILE FOR CUSTOMER SUPPLIED CONTINUOUS HINGE

THIS IS A BUY OUT OR CUSTOMER SUPPLIED HINGE. CHECK PROFILE AND CLEARANCE BEFORE USING THIS DETAIL. CHECK FASTENER LOCATIONS OF HINGE FOR INTERFERENCE AT DOOR OR JAMB.



| | |
|-----|----------|
| 100 | TOP RAIL |
| | S/A D202 |

ERASE NOTE

TOP RAIL FOR SURFACE CLOSERS, OR DORMA TYPE C.O.C., NOT LCN C.O.C.

| | |
|-----|-------------|
| 200 | BOTTOM RAIL |
| | S/A D202 |